

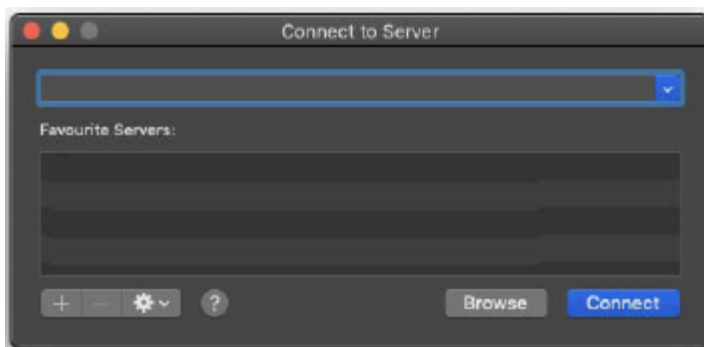

Map S drive for Mac OS

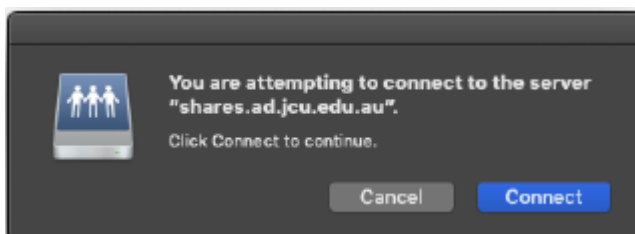
For Mac Computers

Step 1: navigate to Finder  GO  Connect to Server. Alternatively, press the Command Key + K to access a server.

Step 2: In the window that appears type in the name of the shared drive -
smb://ad.jcu.edu.au/shares/jcus



Step 3: Click on the connect button and proceed to fill in your jc123456 and Password to continue.



Step 4: A prompt will appear, select "Registered User" and keyin
Username: **ad\JC number** and Password is your **JCU Email Password**.